

**WEST BOUNDARY CANAL DISTRICT**  
**SAVANNAH GEORGIA**

**CIVIC VISION PLAN**

**Council Work Session**  
**October 17, 2013**

# WEST BOUNDARY CANAL DISTRICT

## *Savannah's Past and Future*

**Savannah's Historic West Boundary has the potential to become a new focus of urban expansion as the city grows from its center. The West Boundary Canal District will redevelop over time as a vibrant link between Savannah's past and future, integrally connected with a multi-modal transportation network serving pedestrians, cyclists, automobiles and rail transit.**

# A CONNECTED FUTURE

## *Existing City Resources*

**The historic bridges of the Central of Georgia Railroad, and the Ogeechee and Springfield Canals frame the character of the district, and will serve a central role within its transportation and greenway network. A connected system of parks, trails and Complete Streets provide the potential to make the West Boundary Canal District one of the most beautiful and memorable parts of the city, and an enhancement to the quality of life offered to the entire community. The City of Savannah's existing civic resources and rights-of-way within the district enable this vision for a more complete and connected future.**



**RAIL TRANSIT**  
Potential transit linkages from the West Boundary Canal District, emerging transit in the city center and the existing River Street line.



**REGIONAL CONNECTIONS**  
The West Boundary Canal District is well connected to regional highway networks, providing direct connections to surrounding communities and the larger southeast region.



**PEDESTRIAN AND BICYCLE NETWORK**  
A connected pedestrian and bicycle network combines Complete Streets with multimodal trails.



The gateway of Sikes Avenue and Guinnett Street, anchored by the landmark Savannah Water Works structure is enhanced through the integration of pedestrian friendly street design and rail transit.



Historic railway bridge transformed into pedestrian and multi-modal linkage between the West Boundary Canal District and the City Center.



The historic canal routes transformed into an integral urban trail network connecting the City Center to the new district and surrounding seaside neighborhoods.

## OVERALL

Savannah's Historic West Boundary has the potential to become a new focus of urban expansion as the city grows from its center. The West Boundary Canal District will redevelop over time as a vibrant link between Savannah's past and future, integrally connected with a multi-modal transportation network serving pedestrians, cyclists, automobiles and rail transit.

The historic bridges of the Central of Georgia Railroad, and the Ogeechee and Springfield Canals frame the character of the district, and will serve a central role within its transportation and greenway network. A connected system of parks, trails and Complete Streets provide the potential to make the West Boundary Canal District one of the most beautiful and memorable parts of the city, and an enhancement to the quality of life offered to the entire community. The City of Savannah's existing civic resources and rights-of-way within the district enable this vision for a more complete and connected future.

## WESTERN BOUNDARY of SAVANNAH GEORGIA



Savannah's West Boundary and Canal of Georgia Railroad Complex, 1954.

## CIVIC VISION PLAN West Boundary Canal District SAVANNAH GEORGIA

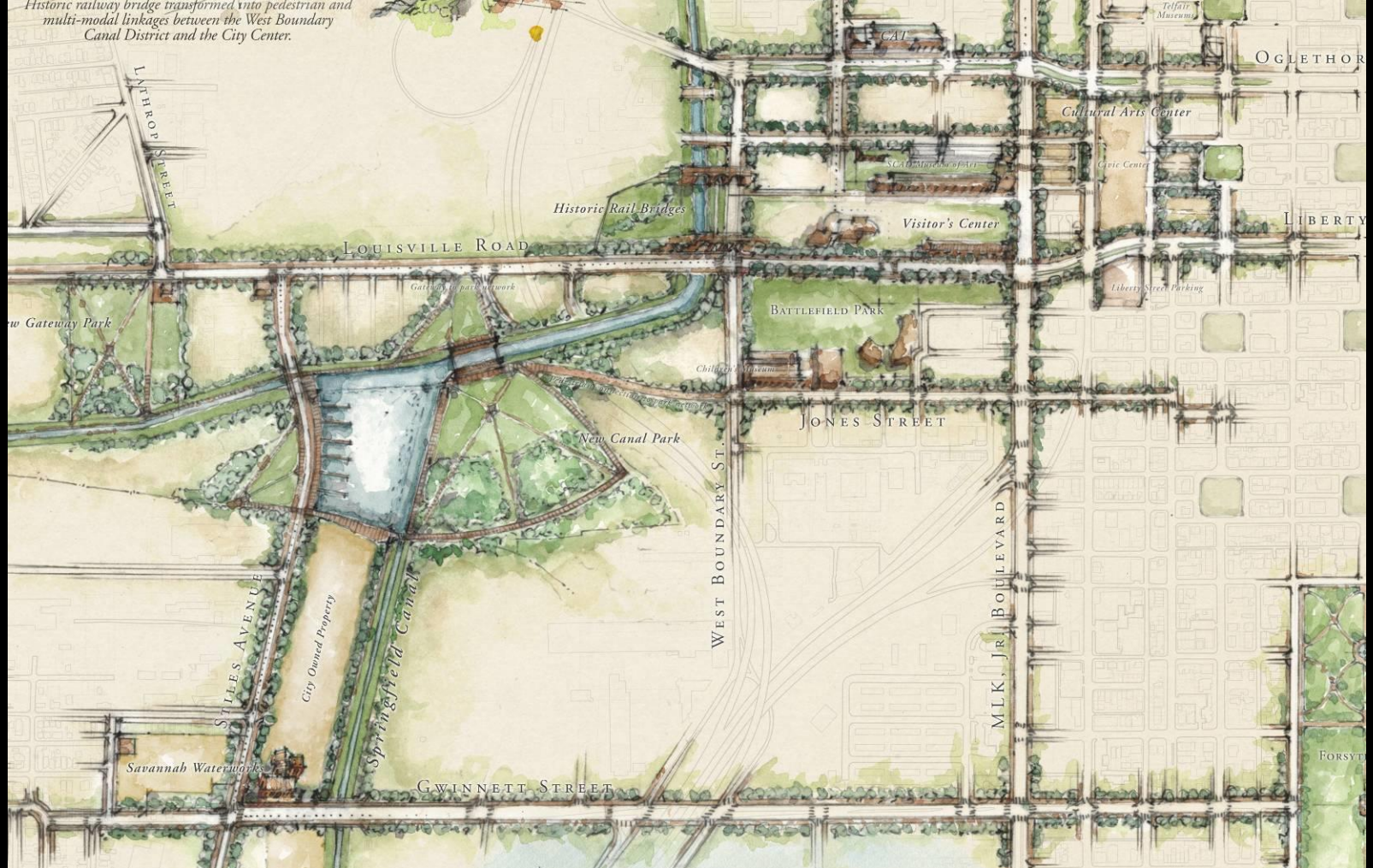
# EXISTING CITY RESOURCES

*The vision can be accomplished using existing City assets.*

- City-Owned Properties
- Existing Rights-of-Way
- Existing Public Uses

*(Visitors Center, Children's Museum, Cultural Arts Center, CAT, etc.)*

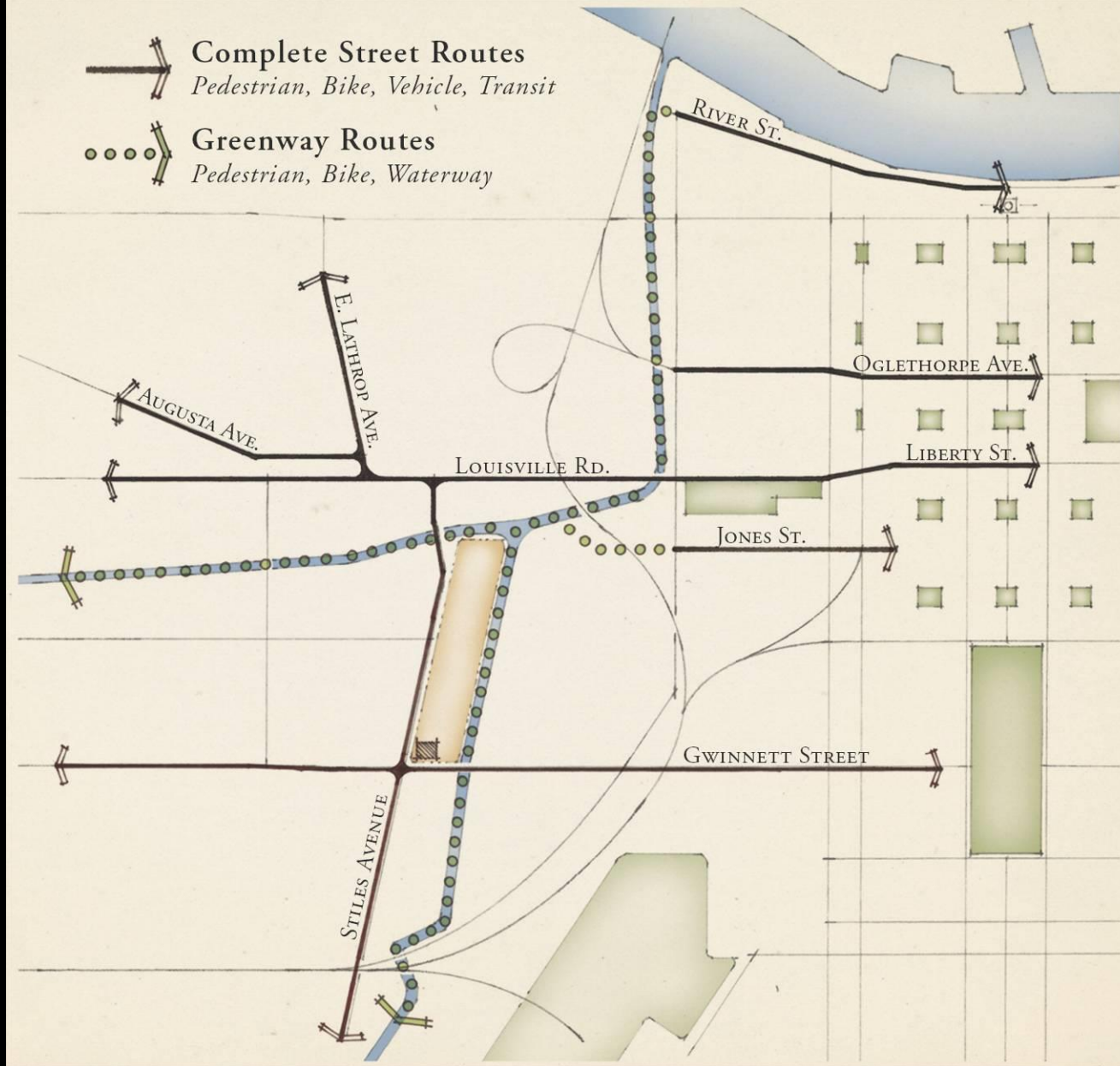




## “COMPLETE STREET” CONNECTIONS

- Safe, comfortable, and convenient movement
- Pedestrians, bikes, vehicles, and transit
- Timeless materials, pedestrian scaled lighting, street trees
- High quality public environment

EAST-WEST	NORTH-SOUTH
Oglethorpe Avenue	MLK, Jr. Boulevard
Liberty Street	West Boundary Street
Louisville Road	Stiles Avenue
Jones Street	
Augusta Avenue	
Gwinnett Street	



*Connecting neighborhoods with high quality pedestrian movements  
("Complete Streets")*





*Historic railway bridge transformed into pedestrian and multi-modal linkages  
between the West Boundary Canal District and the City Center.*

## LOUISVILLE ROAD CONNECTION

*West Boundary Canal District*

SAVANNAH GEORGIA

City of Savannah  
Sottile & Sottile Urban Design

Information contained herein has been compiled from various sources and may contain inaccuracies based on available data. Compliance with applicable codes and ordinances and approval by authorities having jurisdiction is not guaranteed. This plan does not purport a thorough representation of all environmental, architectural or other regulatory conditions. It is intended to create an overview of urban conditions and provide a framework for future development. Sottile & Sottile, 2013

**Louisville Road as a “Complete Street”, with brick sidewalks and crosswalks, street trees, pedestrian scaled lighting, and transit linkage to the city center. The historic rail bridge is a pedestrian connection to the Visitor’s Center.**



*Envisioning an Arena Site...*



STILES AVENUE

Historic Rail Bridges

LOUISVILLE ROAD

Gateway to park network

New Gateway Park

Children's Museum

Pedestrian connection to park network

New Canal Park

WEST BOUNDARY ST.

STILES AVENUE

City Owned Property

Springfield Canal

Savannah Waterworks

GWINNETT STREET





STILES AVENUE

Historic Rail Bridges

LOUISVILLE ROAD

Gateway to park network

New Gateway Park

Children's Museum

Pedestrian connection to park network

New Canal Park

WEST BOUNDARY ST.

City Owned Property

Springfield Canal

Savannah Waterworks

GWINNETT STREET

n al





*Historic Rail Bridges*

LOUISVILLE ROAD

*Gateway to park network*

*New Gateway Park*

*Children's Museum*

*Pedestrian connection to park network*

*New Canal Park*

WEST BOUNDARY ST.

*Savannah Waterworks*

GWINNETT STREET





*The gateway of Stiles Avenue and Gwinnett Street, anchored by the landmark Savannah Water Works structure is enhanced through the integration of pedestrian friendly street design and rail transit.*

## STILES AVENUE & GWINNETT STREET

*West Boundary Canal District*

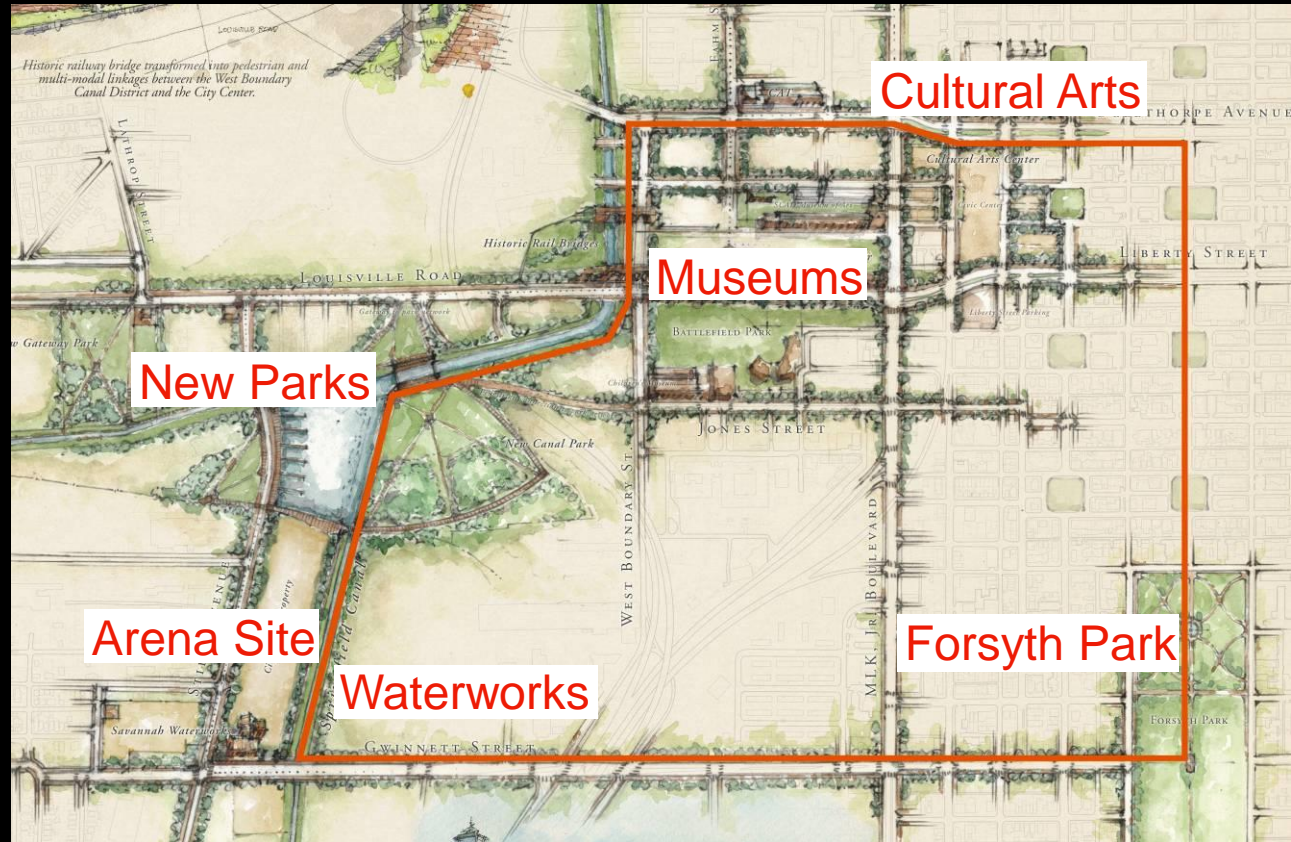
SAVANNAH GEORGIA

City of Savannah  
Sottile & Sottile Urban Design

Information contained herein has been compiled from various sources and may contain inaccuracies based on available data. Compliance with applicable codes and ordinances and approval by authorities having jurisdiction is not guaranteed. This plan does not portray a thorough representation of all environmental, archaeological or other regulatory conditions. It is intended to create an overview of urban conditions and provide a framework for future development. Sottile & Sottile, 2013

**The Savannah Waterworks site developed as a significant public space and an anchor for a revitalized Canal District community. New streetscapes and transit connect the district to adjoining neighborhoods.**

- Greenways generate continuous active use
- Accommodate cyclists, runners, and pedestrians
- Potential for canoes, kayaks, and small tour barges
- Connects West Boundary to the riverfront and city center
- Urban harbor created at canal intersection
- 3 Mile recreational loop trail



## GREENWAY & MULTI-MODAL TRANSPORTATION

Walking/Running/Cycling/Streetcar/Automobiles/Canoes/Kayaks





*The historic canal routes transformed into an integral urban trail network  
connecting the City Center to the new district and surrounding westside neighborhoods.*

## GREENWAY CONNECTIONS

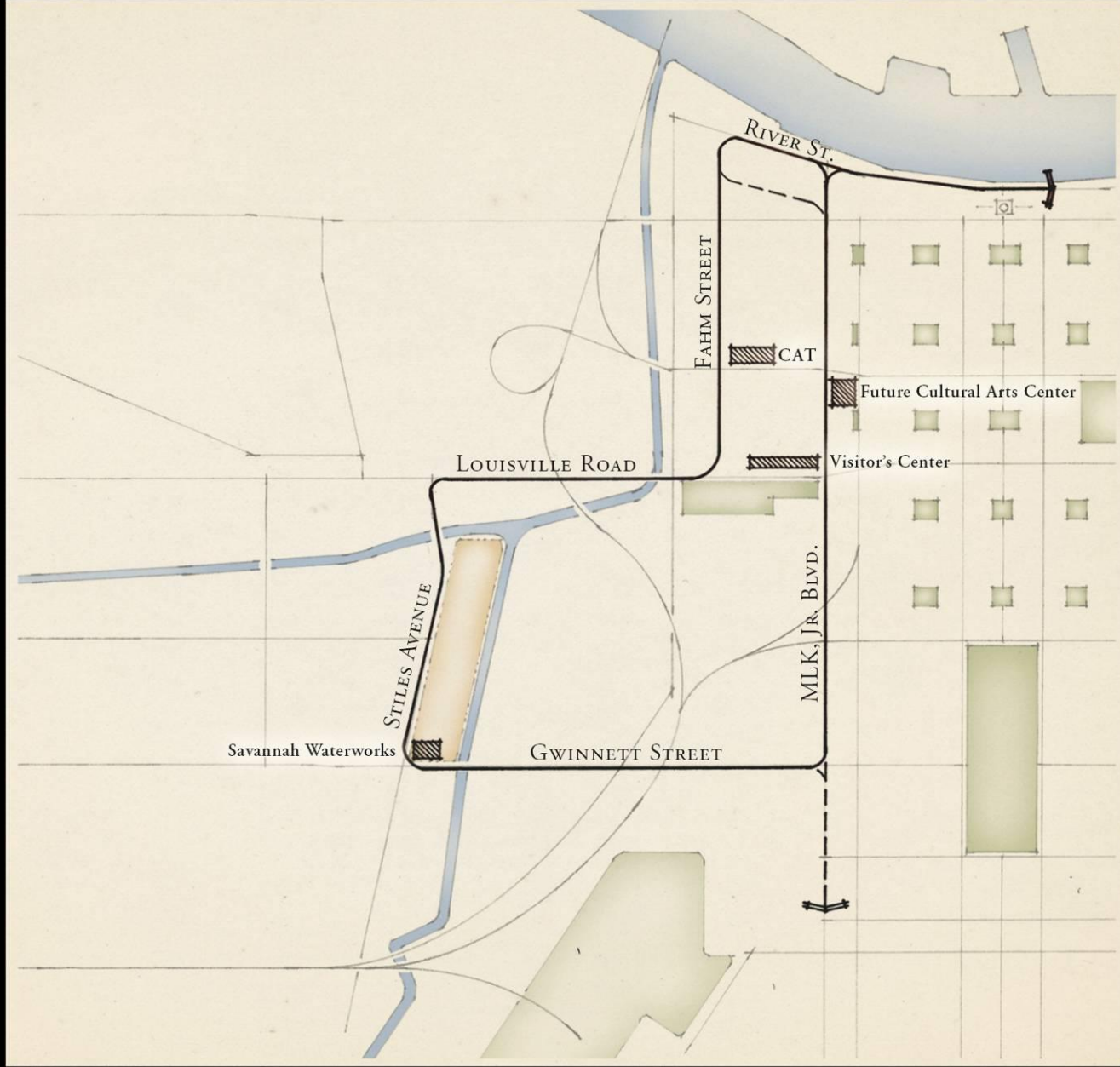
*West Boundary Canal District*

SAVANNAH GEORGIA

Information contained herein has been compiled from various sources and may contain inaccuracies based on available data. Compliance with applicable codes and ordinances and approval by authorities having jurisdiction is not guaranteed. This plan does not purport a thorough representation of all environmental, archaeological or other regulatory conditions. It is intended to create an overview of urban conditions and provide a framework for future development. Sottile & Sottile, 2013

City of Savannah  
Sottile & Sottile Urban Design

**The Canal Greenway with multi-modal trails, pedestrian scaled lighting,  
landscaping, and a restored canal for recreational activities.**



*Stitching the West Boundary into the city center with transit*





*Connectivity to regional network*